

CHESTER

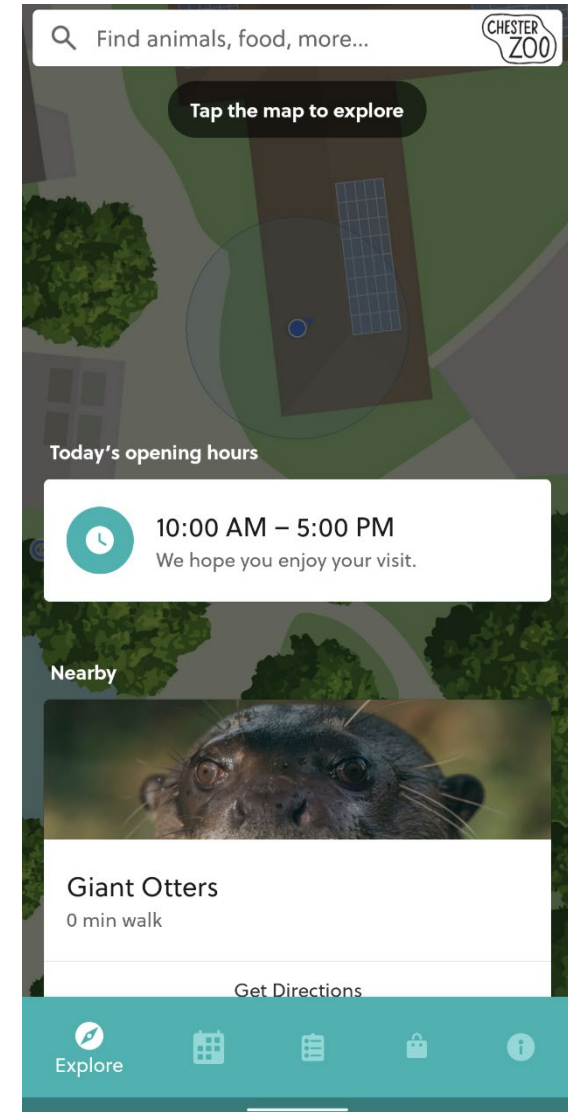
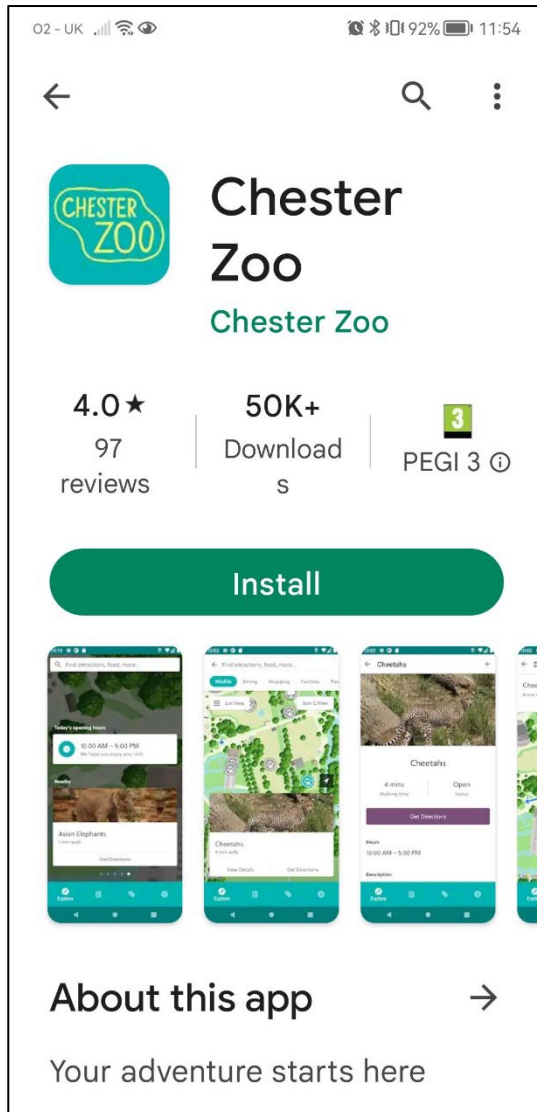
ZOO

What to expect from your visit to

Chester Zoo

Before you arrive at Chester Zoo

You can download our app



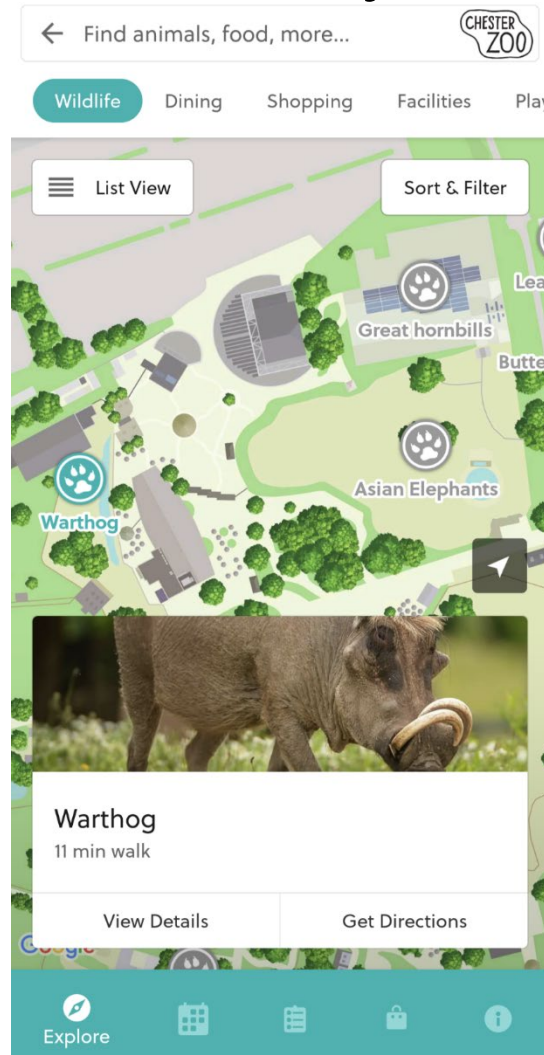
Before you arrive at Chester Zoo

The app can give you **information** about the **zoo**



Before you arrive at Chester Zoo

The app can give you **information** about the **animals** you might **see**



Getting to the Zoo

If you are arriving by **car** you will park at this **carpark**



If you are arriving by **coach**, you will **park** here



Getting to the Zoo

If you are arriving by **bus**, the **bus stop** is here



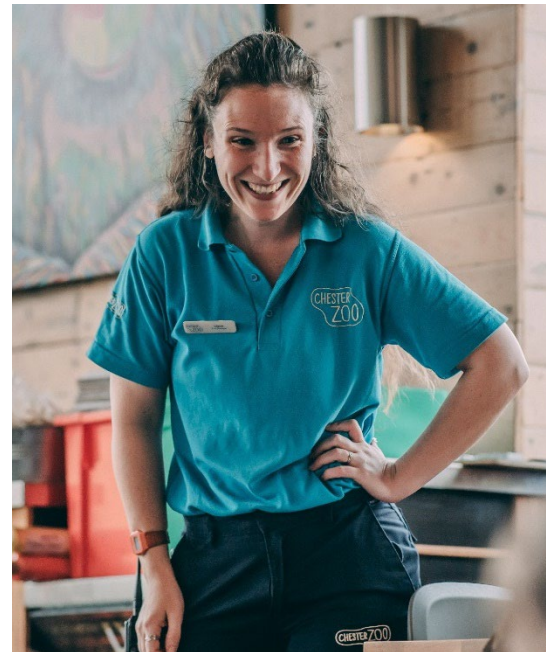
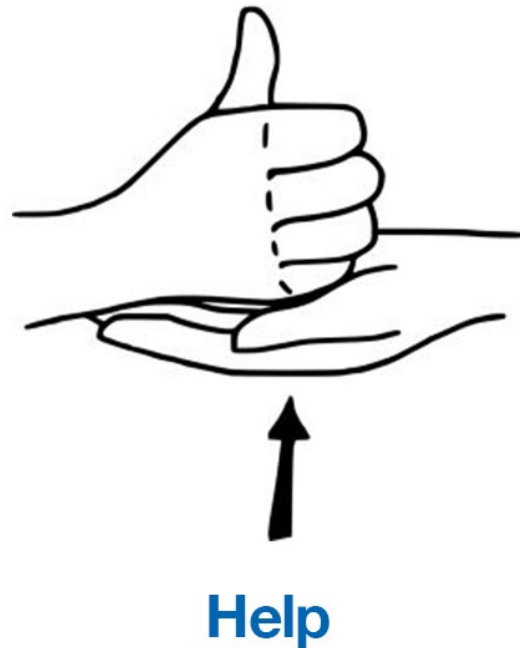
This is Chester Zoo



People wearing this **uniform** work at **Chester Zoo**



If you need **help** you can **ask** somebody who is wearing this uniform



If you need to **buy** a **ticket** you can buy one in here



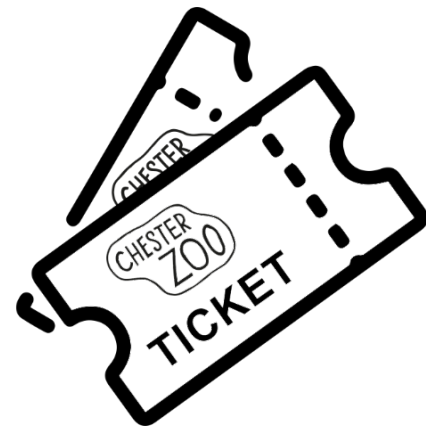
If you need to **hire a mobility aide**, you do this here:



This is the **entrance** to the **zoo**



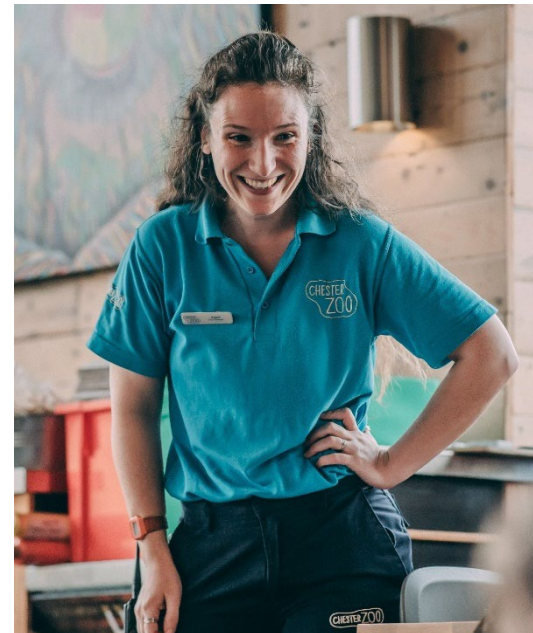
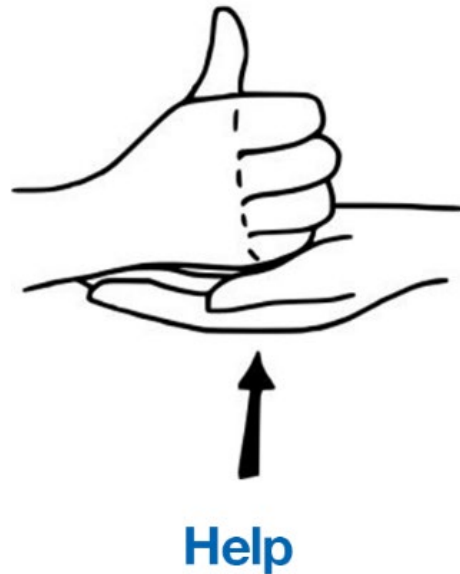
A member of **staff** will **scan** your **ticket** here to enter the zoo



This is the **entrance** to the **zoo**



If you need **help**, you can ask a **staff member**

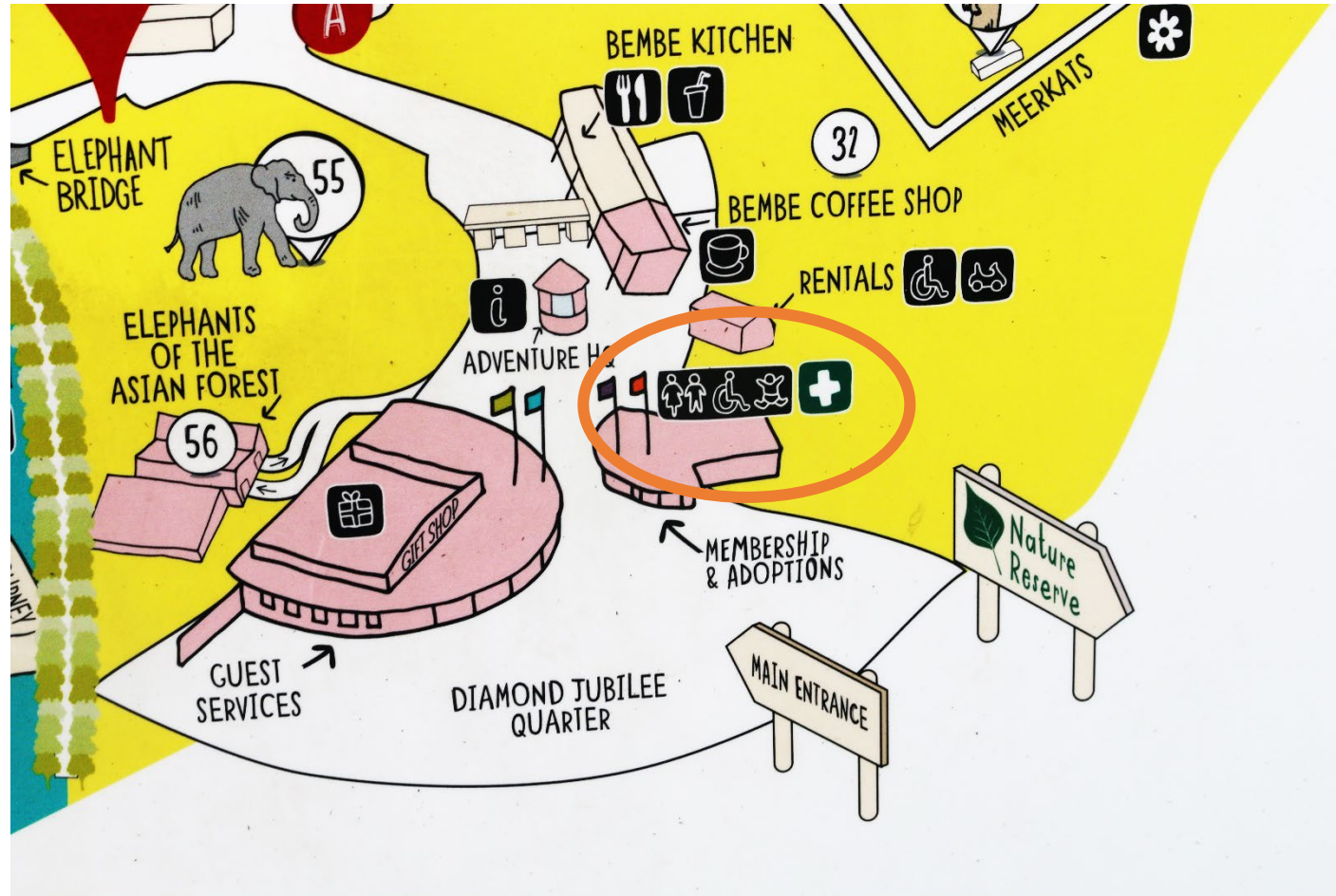


Your day at the zoo

Ahead of you, there is a **map**, you can use this to plan your **route**



The **toilet** sign looks like this on the map:



Your day at the zoo

You will see more of these maps around the zoo

ANIMALS TO SEE

- Madagascar Ring-tailed Lemurs, Fossa and Spotted Lemurs, Black Lemurs & Coquerel's sifaka lemur
- Amelia dogues & Australian sheltie frogs
- Leafy seahorse
- Red panda
- Wetland Bird Nursery
- Small Breeding Centre
- Duke
- Monty allard
- Amur Leopard
- White-bellied Noddy, Red-footed Booby, Brown Noddy, Red-tailed Tropicbird, Fairy Tern
- Pronghorn
- Lowland

THINGS TO DO

- Madagascar Trail
- Wildlife Road
- Visit the Gardens

PLACES TO EAT

- 111 The Hub
- 112 The Hub

ANIMALS TO SEE

- Black rhinos
- Manatees and manatees
- Black rhinos
- Canes
- Rock hyrax
- Painted dog
- Kudu antelope
- Antelope
- Stag
- Jackal
- Leopard
- Spotted deer
- Philippine spotted deer
- Manatee
- Caribou
- Grass antelope
- Asian Wetland Avary
- Manatee
- Greater one-horned rhino
- Camels
- Antelope
- Cheetahs
- Elephants
- Asian Elephant

THINGS TO DO

- Madagascar Trail
- Wildlife Road
- Visit the Gardens

PLACES TO EAT & SHOP

- 111 The Hub
- 112 The Hub

KEY

- Wheelchair scooter and kids buggy hire
- Toilets
- Accessible toilets
- Baby changing
- Accessible changing place
- FREE zone
- Adventure HQ
- Gift shop
- Play area
- Feature garden
- Wildlife Connections hub
- Wheelchair accessible play equipment
- First Aid & Lost children

PLEASE NOTE:
 CHESTER ZOO OPERATES A NO SMOKING POLICY. SMOKING IS ONLY ALLOWED IN THESE DESIGNATED AREAS.

A public brideway splits Chester Zoo in two. Use the WOODEN BAT'S BRIDGE or ELEPHANT BRIDGE to cross from one side to the other.

YOU ARE HERE
 Look for the red circles on posts to help find out where you are in the zoo.

DOWNLOAD OUR APP
 Use our app to plan your visit and find your way around the zoo. You can download the Chester Zoo app from the Google Play or Apple Store.

Nature Reserve
 Visit our 14 nature reserves for native wildlife. Follow the signs from the car park to visit for FREE or for more information go to www.chesterzoo.org/naturereserve

STAY SAFE
 Please do not feed the animals. Feeding can cause health problems and is illegal. Please do not touch the animals. Feeding can cause health problems and is illegal. Please do not touch the animals. Feeding can cause health problems and is illegal.

PLEASE NOTE: THIS MAP IS AN ILLUSTRATION PURPOSES ONLY AND IS SUBJECT TO CHANGE. EVERY TIME TO TRY WE MAY NEED TO MAKE CHANGES TO A DIFFERENT FACILITY OR CHANGE ROUTES FOR SITE IMPROVEMENTS.

You can now go and **explore** the **zoo**.
See what animals and plants you can spot!



You might also see some **wildlife** on the **paths** around the zoo



Signs on some of the **animal houses** will show you what to expect:



In the zoo, there might be **strong smells**



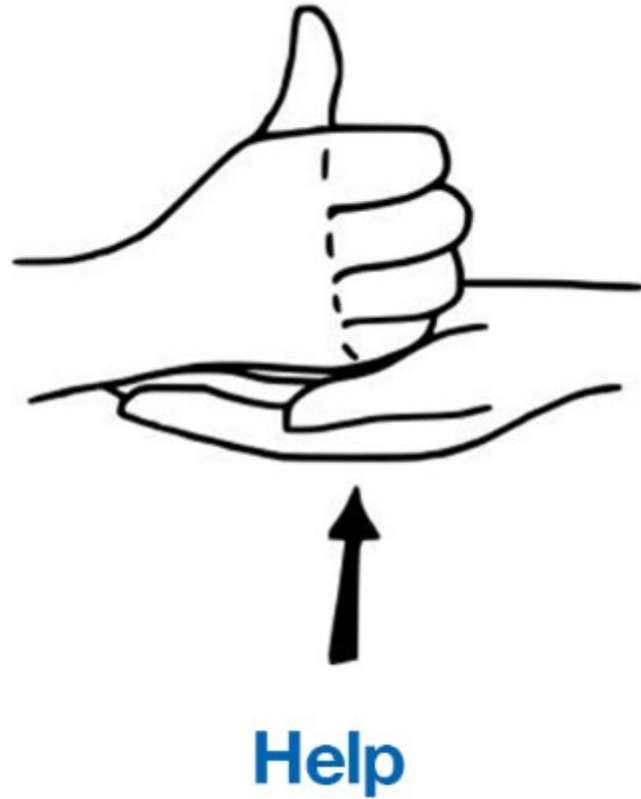
Some of the **paths** can be **steep**



Some of the **paths** have **bridges**.
They might be **bumpy**.



If you need **help** ask a member of staff



They can **help** you find a **quiet space**



They can **help** you with **directions**



Workshops

If you are joining us for a **workshop**,
you will have a **booking confirmation email**.

Hello,

Thank you for booking a visit to bring [REDACTED] on [REDACTED].
We hope you're just as excited as us for your visit.

Please read your confirmation carefully and let us know if any changes are required.

Here's an overview of your workshop timetable:

Group	Time	Workshop	Classroom / Education Officer
Group1	10:45	Leading Workshop	
.	10:45	Rainforests	m B
Group2	10:45	Leading Workshop	
.	10:45	Rainforests	m C

On arrival please go to the Guest Services window.

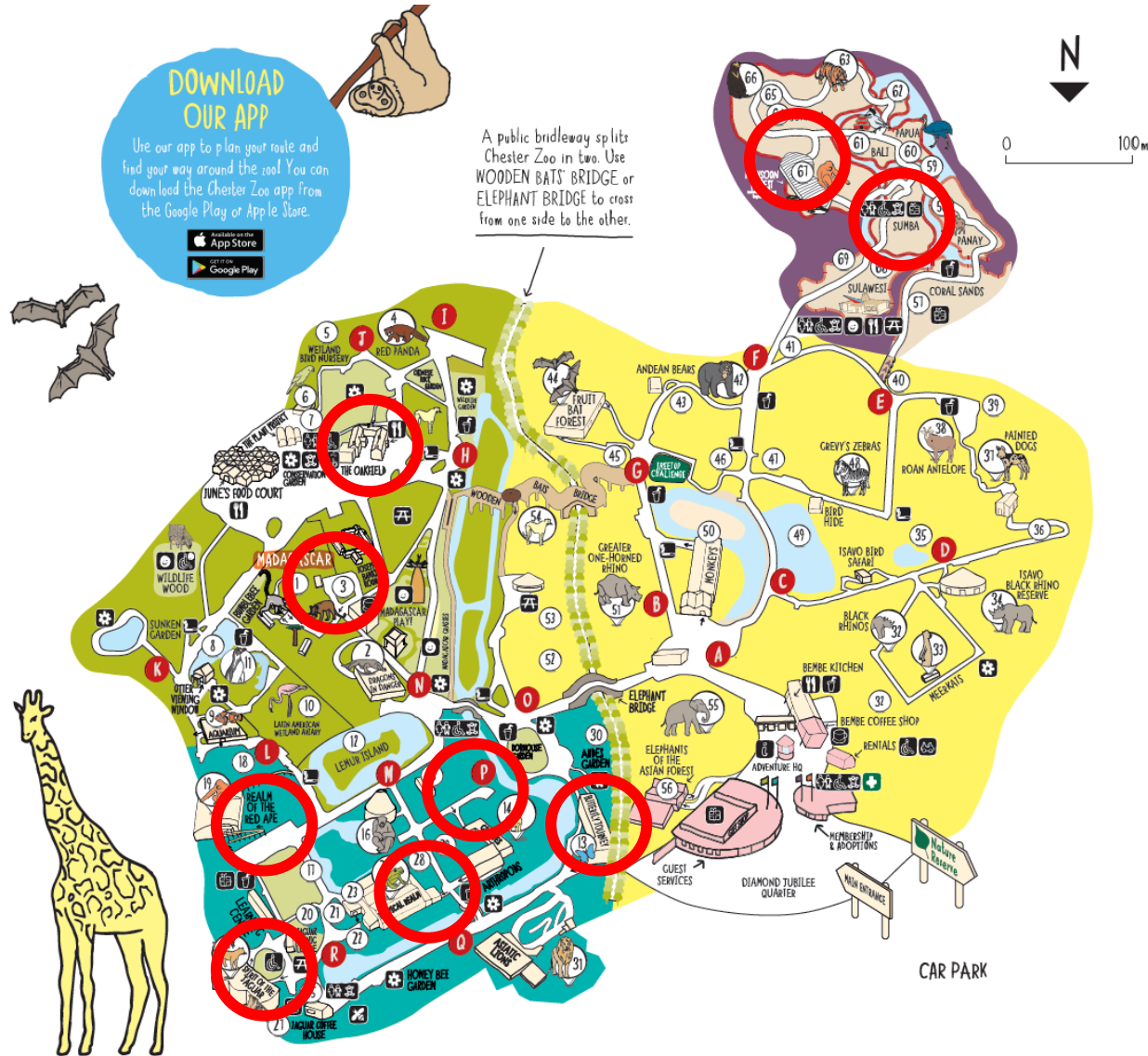
We're looking forward to seeing you soon!

From the Conservation Education and Engagement Team.

The **email confirmation** will tell you where to go.

Workshops

There are **several places** where we may meet you for your workshop.



PLEASE NOTE: THIS MAP IS FOR ILLUSTRATIVE PURPOSES ONLY AND IS SUBJECT TO CHANGE. FROM TIME TO TIME WE MAY NEED TO MAKE SPECIES TO A DIFFERENT POSITION OR CHANGE ROUTES FOR SITE IMPROVEMENTS.

Workshops

A member of **staff** will meet you



Orangutans -
Islands



Workshops

A member of **staff** will meet you



Sumba House
Digital Theatre



Workshops

A member of **staff** will meet you



Butterflies



Workshops

A member of **staff** will meet you



Giraffe house



Workshops

A member of **staff** will meet you



Tropical Realm



Workshops

A member of **staff** will meet you



Realm of the Red Ape

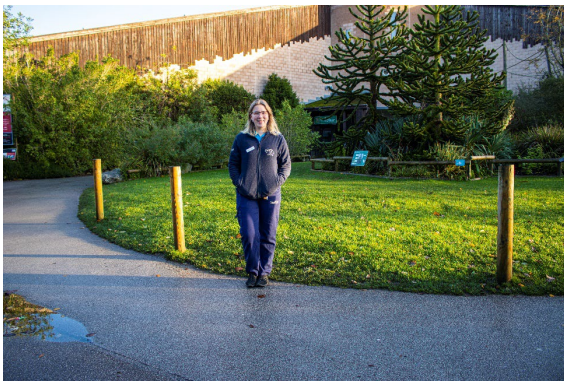


Workshops

A member of **staff** will meet you



Spirit of the Jaguar



Workshops

A member of **staff** will meet you



Joseph Banks
Room



Workshops

A member of **staff** will meet you



The Oakfield



We hope you have a **great day** at the **zoo!**



If you have any more questions about your visit, contact
guest.services@chesterzoo.org

