

LEARN AT CHESTER ZOO

HEAT AND LIGHT

Be a Reptile keeper: Design a suitable habitat for a reptile.

Light and heat levels in the wild vary daily and seasonally. It is important to replicate natural environments for the health and breeding success of our animals.



Studying in the wild

We do research in the wild to find out what conditions our animals need so that we can replicate that in the zoo. It is important to collect this data to ensure we provide the best conditions to keep animals happy and healthy. This involves measuring temperature, humidity, light levels, and recording plant and soil types.

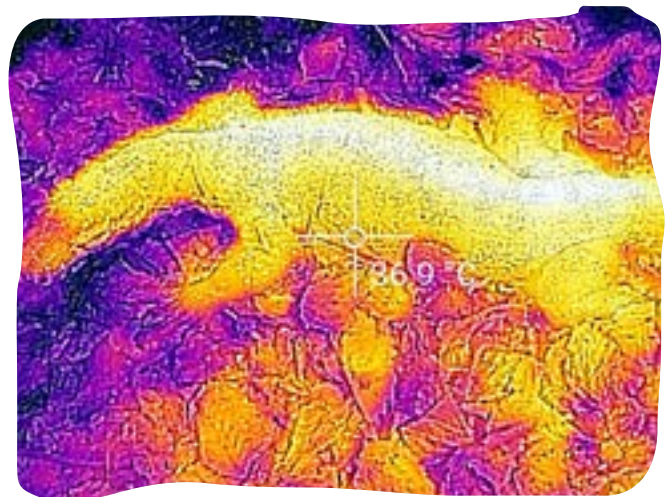


Study in the zoo

In the zoo, we have to provide the right amount of heat and light for our reptiles. Not all reptiles live in the same conditions and the conditions in their natural habitats will vary with time of day and season. Reptile keepers have to consider lots of factors when designing the perfect habitat for their animals.



Komodo Dragon basking

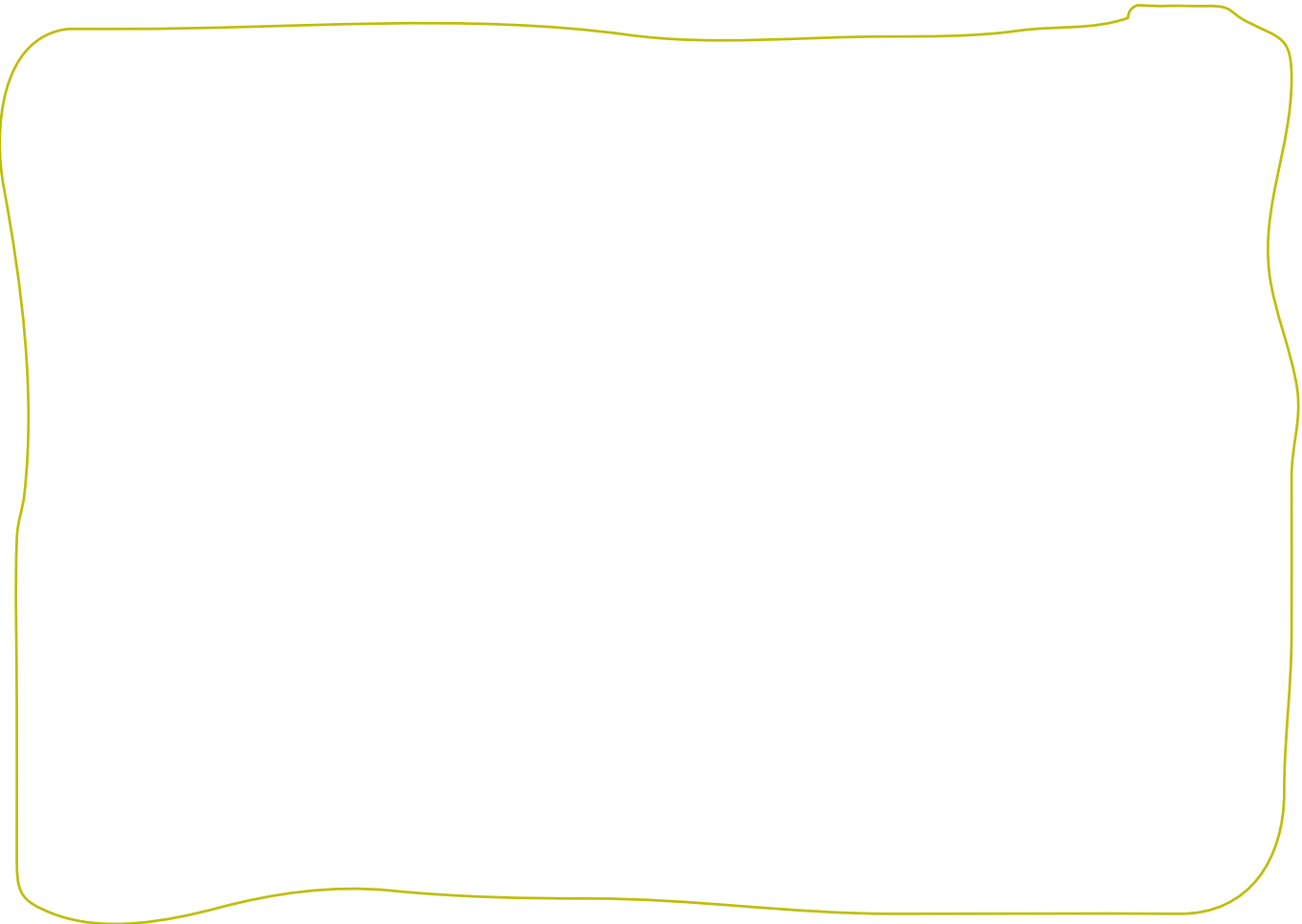


Thermal image of Komodo Dragon

ACTIVITY: Design your own Vivarium

Sketch a habitat below or design your own. Make sure you label it!

Choose a reptile or amphibian species. Look at their habitat. Where is the heat and light coming from? Consider the animals' behaviour; do they like basking, hiding or climbing? If so are there rocks and branches to allow them to do this?



How does a reptile get its heat?

Why does it need heat?

What else do you need to consider?