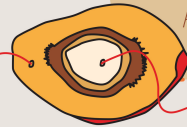


# the BASICS

CHESTER ZOO

OIL CAN BE EXTRACTED FROM TWO PARTS OF THE FRUIT. THE OUTER FLESH AND THE SEED, OR KERNEL

PALM FRUIT FLESH

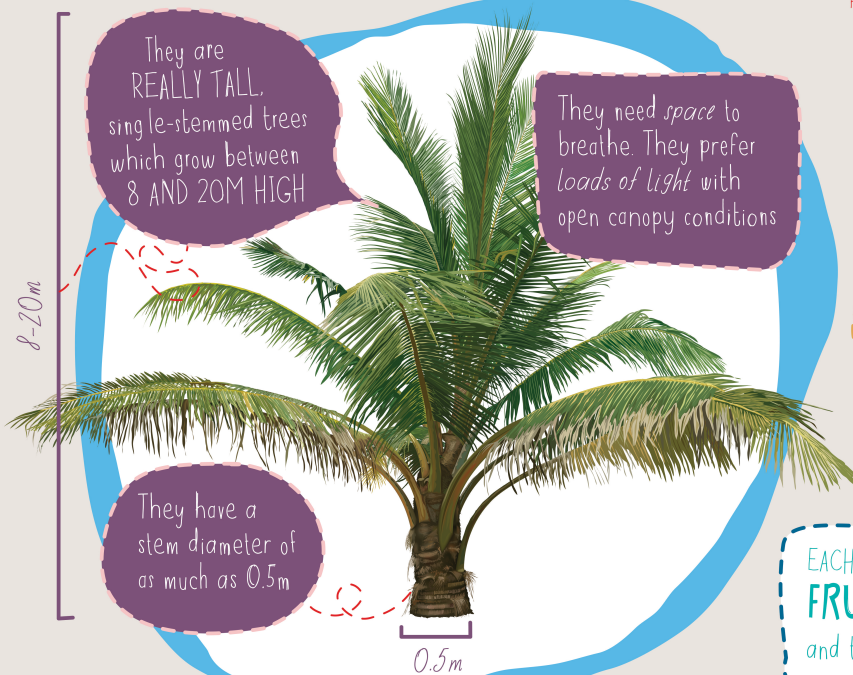


PALM KERNEL

They are REALLY TALL, single-stemmed trees which grow between 8 AND 20M HIGH

They need space to breathe. They prefer loads of light with open canopy conditions

They have a stem diameter of as much as 0.5m



Palm oil from the flesh produces **EDIBLE PALM OIL**, which you'll find in food products

**Palm kernel oil**

or its derivatives are mainly USED IN **COSMETICS**, **DETERGENTS** and **CHEMICALS**



Palm oil kernels CAN BE ROASTED AND EATEN or ground into flour

EACH INDIVIDUAL PIECE OF FRUIT CONTAINS **50% OIL**

and the fruit can be HARVESTED ALL YEAR ROUND

In well-managed plantations, palm oil FRUIT PRODUCES 3-8 TIMES MORE OIL from a given area than ANY OTHER TROPICAL or TEMPERATE OIL CROP



TO GROW PALM OIL TREES YOU NEED:



1,780-2,280mm rainfall per year



2-4 month dry period



21-24°C mean minimum temperature

## ...the COMPARISON

Palm oil isn't the only vegetable oil you'll find in your food. But how does it compare?

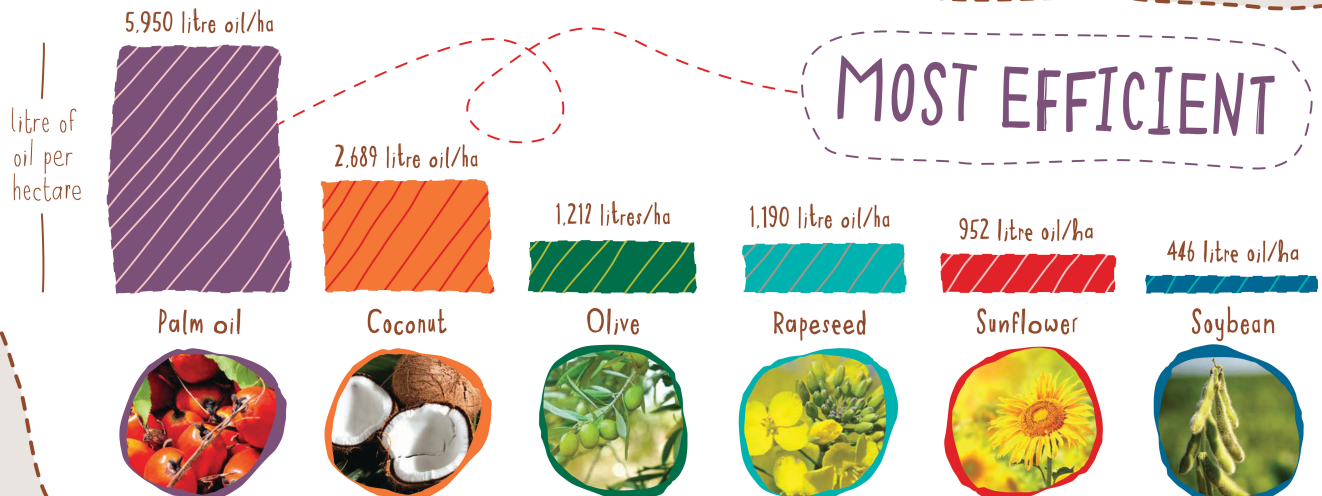
WHICH PLANT PRODUCES THE MOST OIL?

The plants can only grow in areas 10° north or south of the equator.

These are also the most biodiverse areas on the planet



**MOST EFFICIENT**



IF DEMAND FOR OIL ISN'T MET BY PALM OIL, OTHER CROPS MORE DEMANDING ON THE ENVIRONMENT WILL TAKE ITS PLACE

BECAUSE OTHER CROPS ARE LESS EFFICIENT, THIS WILL CONVERT EVEN MORE LAND INTO USE FOR AGRICULTURE