

LEARN AT CHESTER ZOO

MINDFUL MOMENTS

NATURE NOISES - Take notice of sights, sounds and smells

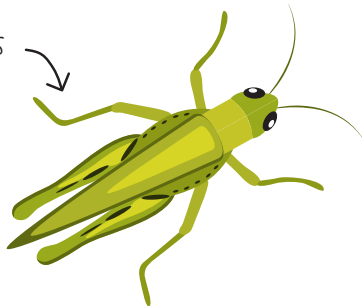
Listen – perhaps close your eyes and just listen how many different sounds can you hear?

Are they made by plants or animals, are they made by nature or are they made by humans?

How many sounds can you hear?

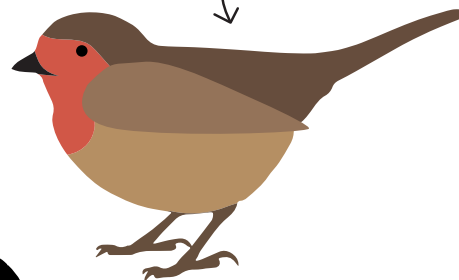
What might you have heard in this very spot in 1931 the year the zoo opened?

Grasshoppers
chirping...

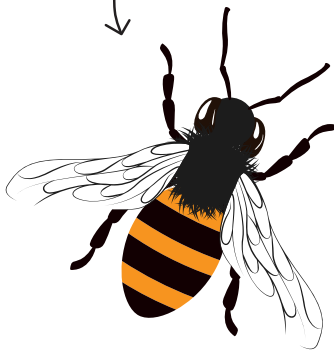


Listen to the trees... →

A robin chirping...



Bees buzzing...

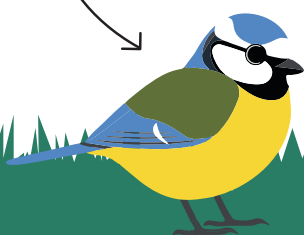


Whistle a
happy tune...

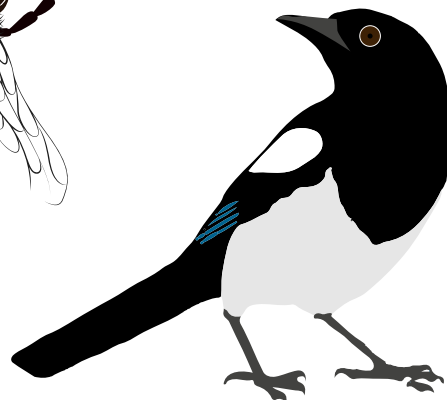
Blackbirds
singing...



A blue-tit
tweeting...



Magpies squawking...



LEARN AT CHESTER ZOO

MINDFUL MOMENTS

NATURE SMELLS - our wildlife might be smellier than you thought!



We have a plant called pineapple weed that smells like...pineapple!



There is a mushroom that you might come across in the woods that when it dries smells like curry powder



And the smell of a fox is unmistakable with its musky odour

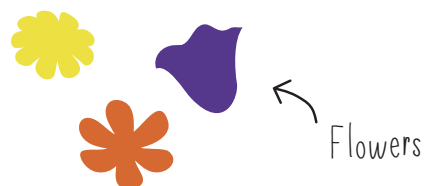
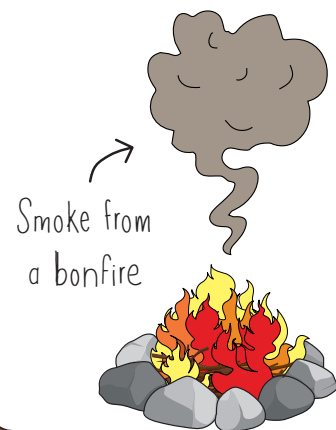
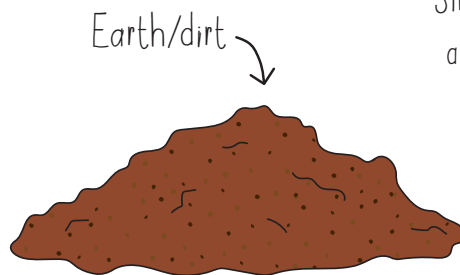
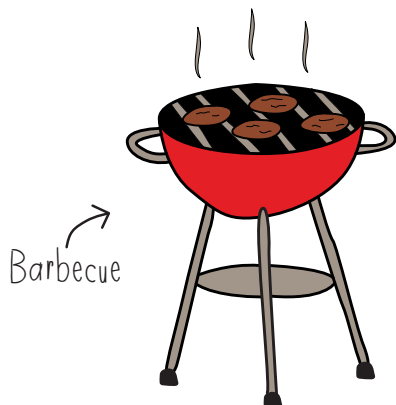
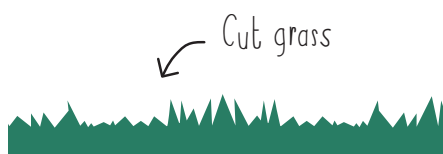
Smell is a really important form of communication for many species but it is not our (humans) strongest sense. **Take a moment and a deep breath and see what you can smell.**

Can you distinguish individual smells?

Where are they coming from?

Are the smells human or natural?

What might you have smelt in 1931 the year the zoo opened?

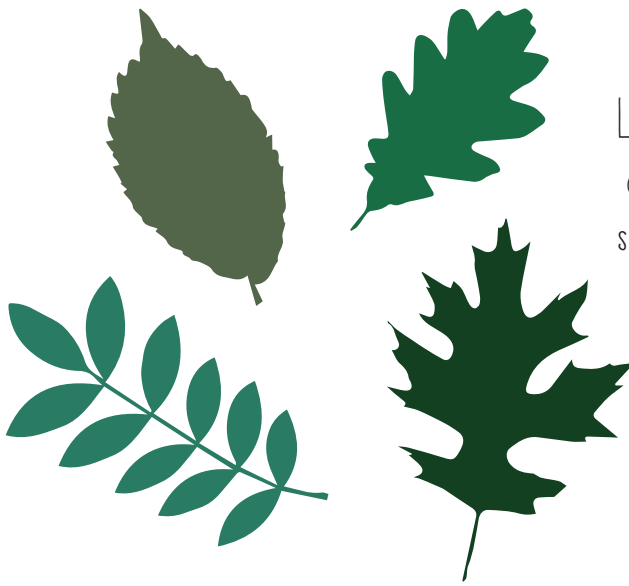


MINDFUL MOMENTS

NATURE SIGHTS - TERRIFIC TREES

Is there a tree nearby?

Take a closer look, you might be surprised by how much you find!



Look at the leaves - are they big, curvy, spiky, small or huge?

How about a slug trail?

Are there any spider webs?

Any scratches or feathers?

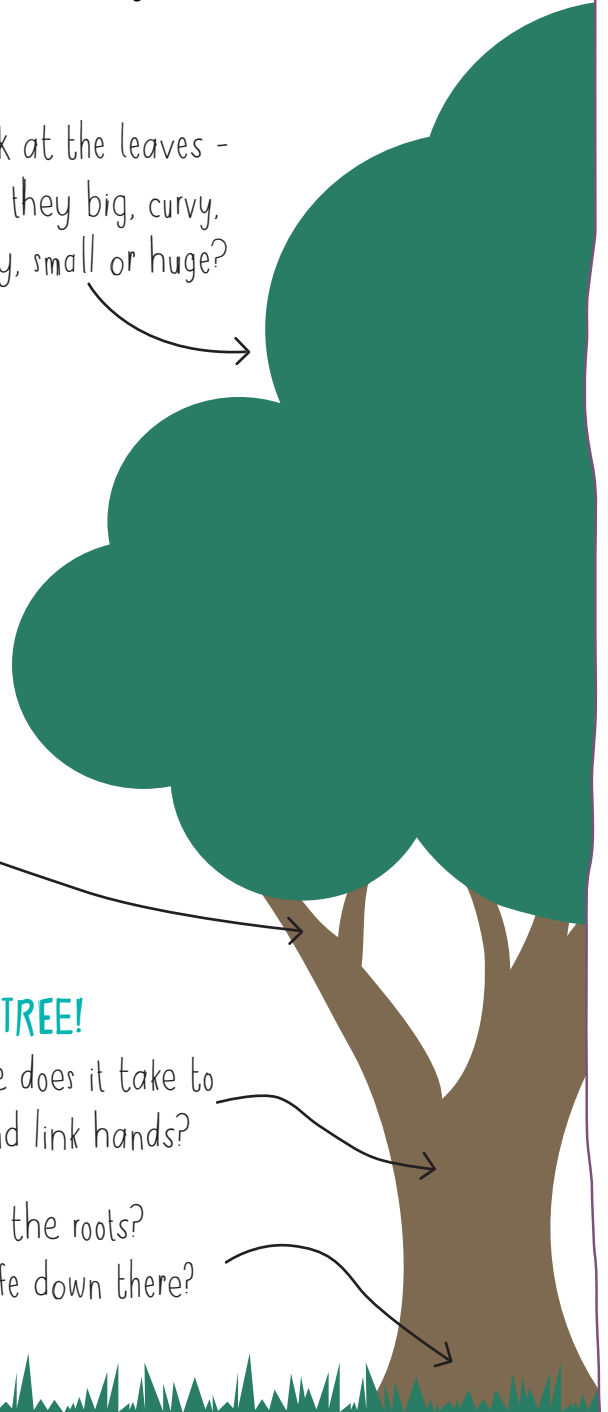
What is the bark like and can you see any sign of animals?

HUG A TREE!

How many people does it take to hug the tree and link hands?

Has anything fallen from the tree?

What's near the roots?
Any signs of life down there?



MINDFUL MOMENTS

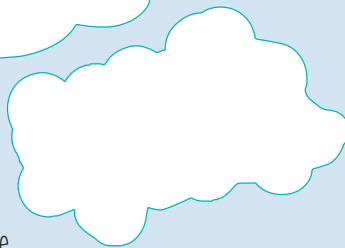
NATURE SIGHTS - CRYPTIC CLOUDS

Look at the sky, can you see any clouds?

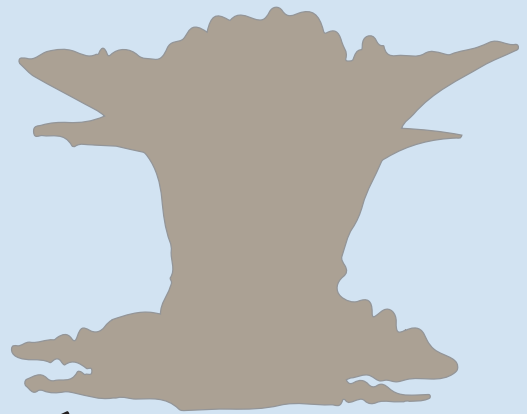
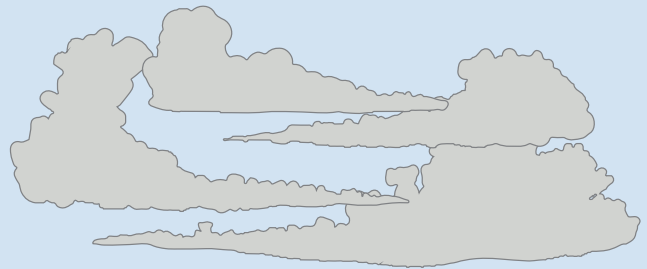
High up and wispy
- It's a CIRRUS!
No rain here!



Soft and fluffy -
It's a CUMULUS!
The weather should be fine.



Low and blanket like -
It's a STRATUS! Could mean
rain when it's warm!



Big, dark and fluffy -
It's a CUMULONIMBUS!
A storm may be on its way!

What shapes can you see in the clouds ?

How are the shapes changing?

Are any of the clouds manmade?

MINDFUL MOMENTS

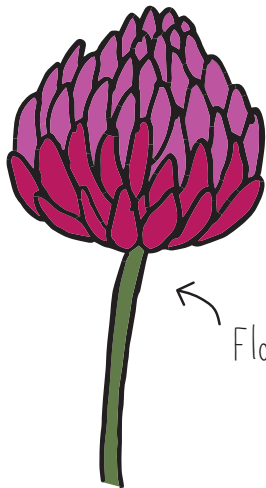
NATURE SIGHTS - RAINBOW COLOURS

Do you think of nature as being green? Take a closer look how many different shades of green can you actually see?

Now take a look at the different colours around you.
Can you find all the colours of the rainbow?

How many natural or man-made things can you see around you that are red, orange, yellow, green, blue, purple?

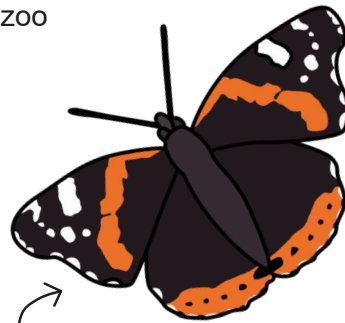
What do you think you may have seen in 1931 the year the zoo opened where you are right now?



Flowers



Trees



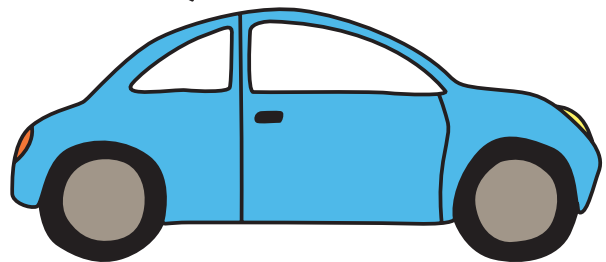
Butterflies



Tin cans



Bees



Cars