

BEAUTIFUL BUTTERFLIES



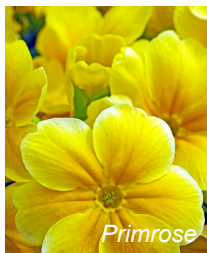
Planting for BUTTERFLIES

When choosing plants to add to your green space, try to make sure that something is always flowering across as much of the year as possible. Check out our handy table below for some ideas of what you can plant and when it flowers – it can be as easy as letting some nettles grow.

FOOD FOR THE SEASON

Spring – March to May

Primrose
Sweet William
Forget me not
Chives
Borage
Bugle



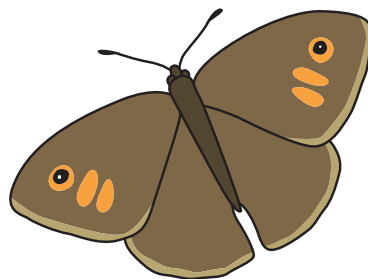
Summer – June to August

Ox-eye daisy
Lavender
Wild marjoram
Scabious
Cornflower
Knapweed



Autumn – September to October

Asters
Ice plant
Dahlia (single petals)
Honeysuckle
Flowering ivy



Don't forget food for **CATERPILLARS** too! If we don't feed them, we won't see any butterflies.

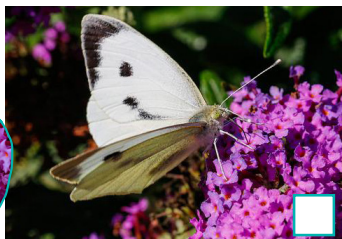
For caterpillars, we recommend planting:

- **Lady's smock** (*Cardamine pratensis*) to entice the orange tip butterfly. It's also a great plant for wetter soil
- **Bird's foot trefoil** (*Lotus corniculatus*) to encourage the common blue butterfly.
- **Common sorrel** (*Rumex acetosa*) will be sure to be noticed by any small copper butterfly.
- **Fescue grasses** are a particular favourite of the meadow brown butterfly.
- **Yorkshire-fog grass** (*Holcus lanatus*) can attract the marbled white, speckled wood and small skipper butterflies.
- **Don't want to plant anything?** We've got you covered. Long uncut grasses and a good clump of stinging nettles can play host to caterpillars of comma, peacock, red admiral and small tortoiseshell butterflies.

So let that unkempt corner of your garden grow **WILD** and say it's for the butterflies!

LEARN AT CHESTER ZOO

Large white



Small white



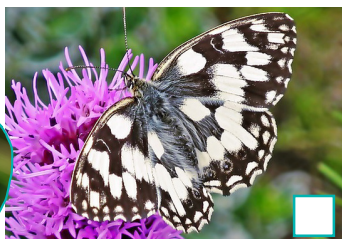
Green-veined white



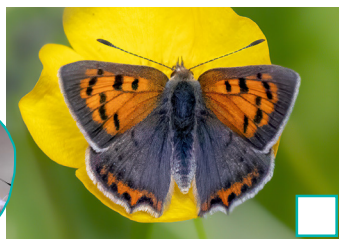
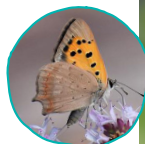
Orange tip



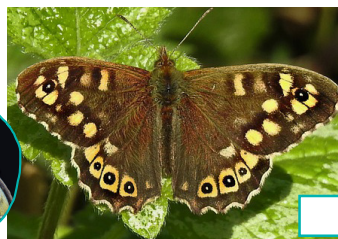
Marbled white



Small copper



Speckled wood



Meadow brown



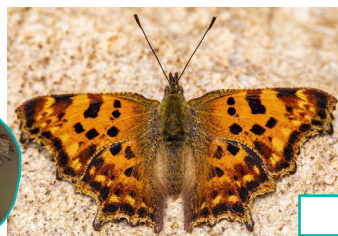
Ringlet



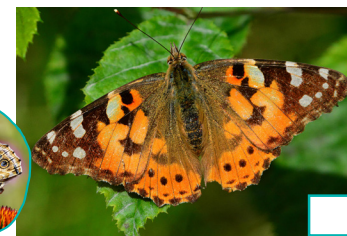
Gatekeeper



Comma



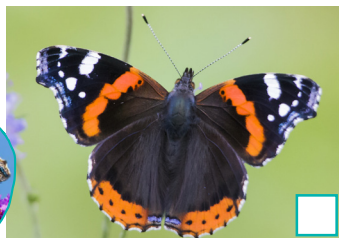
Painted lady



Peacock



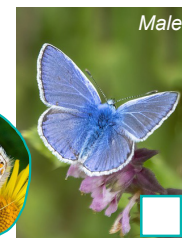
Red admiral



Small tortoiseshell



Common blue



Holly blue



Small skipper



Large skipper



BUTTERFLY
GUIDE 