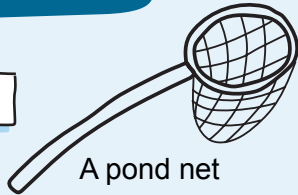


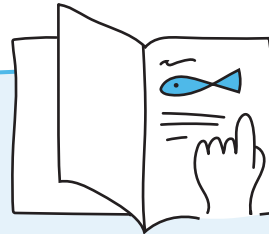
## HOW TO POND DIP

Pond dipping is a fun and easy way to connect with wildlife and build your identification skills. Pond dipping can be done at any time of the year, but it is best in the spring and summer.

### What you will need



A pond net



An identification guide



A tray (preferably white to make wildlife easier to find)



Hand wash



A bucket



A hand lens or magnifying glass

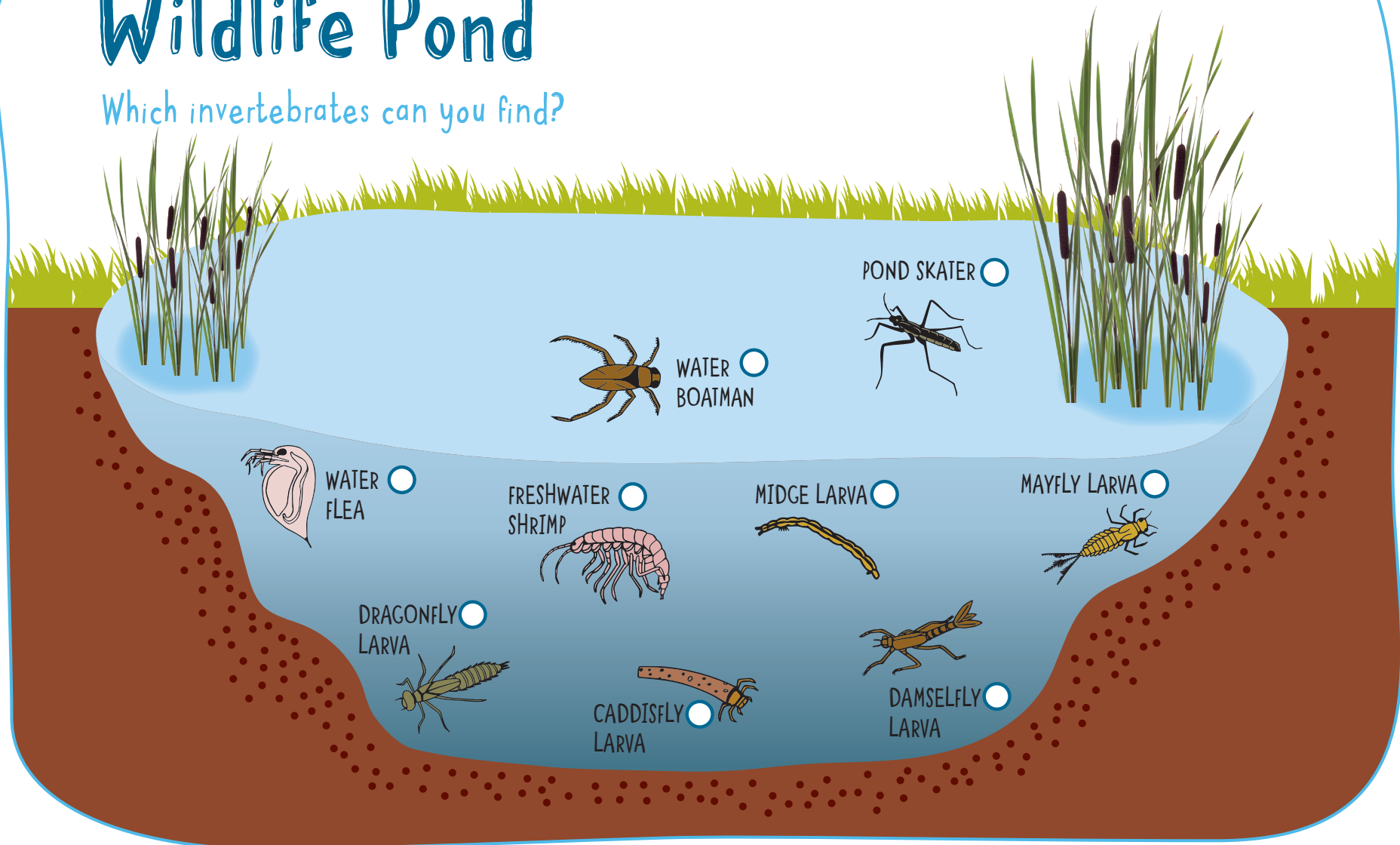


### How to pond dip

1. To start, scan the surface of the water for animals like pond skaters and adult dragonflies. If you can find these then it's likely there will be plenty of invertebrates below the surface of the water.
2. Place a tray to one side, in a safe spot to make sure it doesn't get stepped on.
3. Fill up a bucket with pond water and use to fill the tray halfway with water.
4. Dip your net into the pond and make a figure of eight motion. Invertebrates live at different depths so make sure that you sweep at the surface, middle and bottom on the pond, being careful to not churn up the mud at the bottom.
5. Lift your net out and immediately turn the contents out into your tray.
6. Make sure to return what you've found to the pond and don't keep them in the tray too long.

# Wildlife Pond

Which invertebrates can you find?



# Rock Pool

Which marine invertebrates can you find?

